

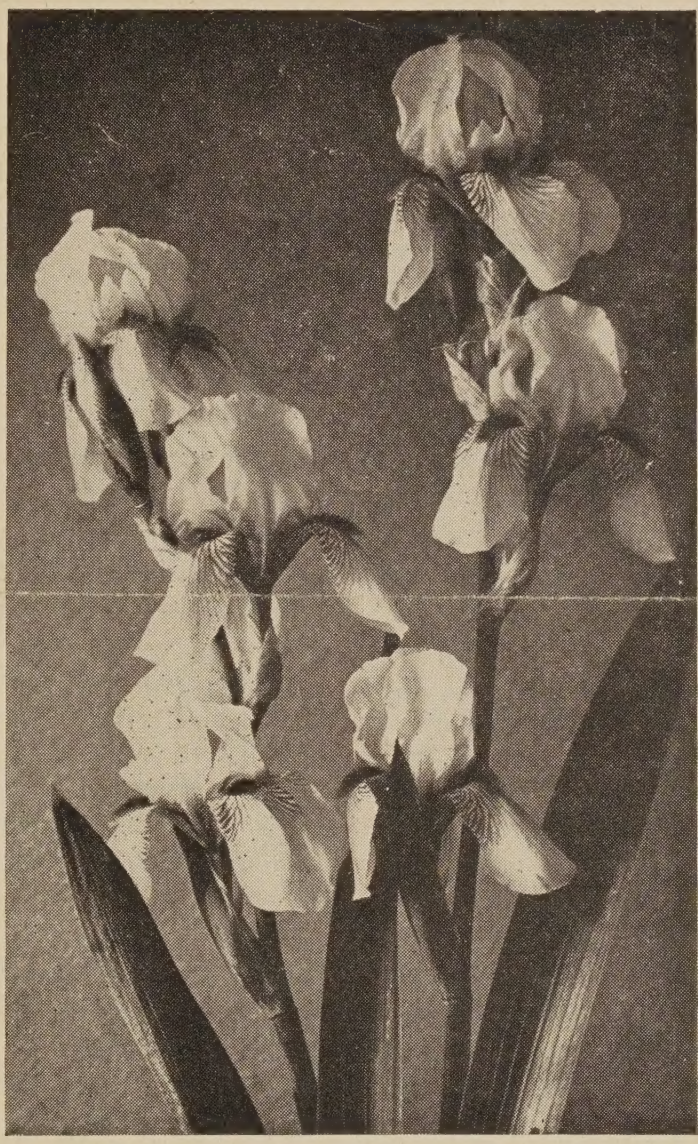
Historic, Archive Document

Do not assume content reflects current scientific knowledge, policies, or practices.

62.11

**LIBRARY
RECEIVED**
★ MAY 26 1948 ★
U. S. Department of Agriculture

1948
IRIS Catalogue



Rockmont Nursery

Established 1893

Phillip Andrews
P. O. Box 266
Boulder, Colorado

TERMS. Postage paid on orders of \$2.00 or more. Please add 25c to cover postage and packing if order amounts to less than \$2.00.

All iris labelled. No C.O.D. shipments. Please send cash with order.

Our shipping season for long bearded iris starts in early July and continues through August and September. We prefer planting in August. Our iris are grown with plenty of sunshine and controlled moisture. We ship only large, freshly dug rhizomes that are full of vim and vigor.

Our spring catalogue lists a large assortment of French Hybrid Lilacs, Trees, Shrubs, Hardy perennials, and Evergreens. A copy sent free upon request.

IRIS — Long Bearded

- | | |
|--|--|
| Alice Harding (Cayeux) M. 40". D.M. A.M.
Satin primrose yellow. .35 | Ella Winchester (Grinter, 1935) M. 38". H.M.
Mammoth red mahogany. .35 |
| Anitra (H. Sass, 1936) L. 36". H.M. Silvery
sky blue of large size. .40 | Elmohr (Loomis, 1942) M. 36". H.M. A.M.
Dykes Medal in 1945. Colossal red violet
seedling of Wm. Mohr. Ruffled edge and
very beautiful. \$1.25 |
| At Dawning (Kirkland, 1935) M. 36". H.M.
A.M. Pink and gold blend. .40 | Elsa Sass (H. Sass, 1939) ML. 36". H.M.
A.M. Beautiful new sulphur yellow. .60 |
| Azure Skies (Pattison, 1943) M. 36". A.M.
Possibly the most lovely of all light blue
iris. Beautifully ruffled. \$3.00 | El Tovar (H.P. Sass, 1933) L. 36". H.M.
A.M. Golden standards and falls of lus-
trous maroon brown. .30 |
| Berkeley Gold (Salbach, 1942) L. 36". A.M.
1946. Very rich yellow. Vigorous grower
and free bloomer. \$2.50 | Eros (Mead-Riedel, 1934) M. 35". H.M. Ex-
cellent salmon pink. .35 |
| Blackamoor (J. Sass) M. 36". H.M. Massive
bluish purple. .30 | Fair Elaine (Mitchel, 1938) M. 38". H.M.
A.M. Standard light yellow, falls of deep
yellow set off by an orange beard. .75 |
| Blue Shimmer (J. Sass, 1942) M. 36". A.M.
1944. An outstanding white and blue pli-
cata. Sparkling white with all-over pattern
of blue stippling. \$4.00 | Far West (Kleinsorge, 1936) M. 38". H.M.
A rare mixture of of gold-coral-henna. .40 |
| Blue Triumph (Grinter) M. 36". A.M. H.M.
A grand light blue. .35 | Frieda Mohr (Mohr-Mitchell, 1926) L. 40".
Large lilac-rose, ruffled flowers. .35 |
| Brown Thrasher (Kirkland, 1941) M. 34".
A.M. A rich golden brown bicolor. \$4.00 | Goldbeater (Kleinsorge, 1944) M. 36". H.M.
1945. Pure chrome yellow. \$4.00 |
| Bryce Canyon (Kleinsorge, 1944) M. 36".
A.M. 1947. A new iris of exceptional merit.
Warm henna-copper, self colored and large
flowers. \$10.00 | Golden Fleece (J. Sass, 1940) M. 38". H.M.
A.M. Large lemon colored flower with
creamy falls edged in gold. \$2.00 |
| Buffawn (Andrews, 1940) M. 34". Glowing
pink and fawn, large flowers, distinctive
and beautiful. .75 | Golden Majesty (Salbach, 1938) ML. 40" H.M.
A.M. Exceptionally fine deep yellow. .75 |
| Burning Bronze (Ayres, 1934) M. 36". A.M.
H.M. Very brilliant light red. .50 | Golden Treasure (Schreiner, 1936) M. 38".
H.M. A.M. Silky cream color, golden cen-
ter. .50 |
| Casa Morena (DeForest, 1943) M. 38". H.M.
A.M. 1946. Extra large flowers of glisten-
ing rich brown. \$6.00 | Grand Canyon (Kleinsorge, 1941) M. 40".
H.M. A.M. 1944. Charming blend of
deep copper-plum and bronze. \$1.00 |
| Cheerio (Ayres, 1934) M. 40". H.M. A.M.
Falls of rich velvety red and standards of
lustrous old gold. .35 | Great Lakes (Cousins, 1938) M. 40". H.M.
A.M. D.M. No. 1 in the AIS symposium
for four years. Pure clear blue. \$1.00 |
| China Maid (Milliken, 1936) M. 40". H.M.
A.M. Gigantic pink blend with tones of
copper and gold. .75 | Happy Days (Mitchell, 1934) E. 40". A.M.
Extra large yellow iris of medium shade. .35 |
| Christabel (Lapham, 1936) M. 38". H.M.
A.M. Glowing brilliant red, large flowers.
.50 | Jean Cayeaux (Cayeux, 1931) M. 36". A.M.
Graceful iris in shades of coffee tan, golden
glint. .35 |
| City of Lincoln (H. Sass, 1936) L. 42". H.M.
A.M. Clear golden standards and fiery
red falls. Very outstanding variagata. .60 | Joycette (J. Sass, 1931) L. 40". Large bright
clear red. .35 |
| Daybreak (Kleinsorge, 1941) M. 38". H.M.
A.M. Tied for Dykes Medal in 1946. Huge
golden pink with slight undertone of cop-
per. \$3.00 | Junaluska (Kirk, 1934) E.M. 40". A.M. Ex-
ceptional blend of gold, copper-rose, and
red. .40 |
| Deep Velvet (Salbach, 1939) ML. 38". H.M.
A.M. Rich deep red violet. \$1.50 | Lady Paramount (White, 1932) ML. 42". H.M.
Light flowers of primrose yellow, sturdy
growth. .35 |
| | Los Angeles (Mohr-Mitchell, 1927) M. 36".
A.M. A beautiful blue and white plicata.
.35 |

- Marco Polo** (Schreiner, 1936) EM. 36". H.M. Huge bicolor, rose and crimson. **.40**
- Marquita** (Cayeux, 1931) ML. 34". A.M. Glorious ivory standards, falls same color but lined maroon, huge flowers. **.40**
- Mary Geddes** (Stahl.-Wash. 1931) M. 36". H.M. A.M. D.M. A rich golden salmon blend with coral tone in falls. **.35**
- Ming Yellow** (Glutzbeck, 1938) ML. 36". H.M. A.M. Stately and serene, a faultless yellow self. Good substance and slightly ruffled. **.75**
- Minnie Colquitt** (H. Sass, 1942) M. 36". H.M. 1943, A.M. 1945. Massive white plicata, with broad band of wine-purple stitching on both standards and falls. Lightly ruffled and very handsome. **\$3.00**
- Missouri** (Grinter, 1933) ML. 37". Dykes Medal in 1937. A giant clear blue of unusual texture. **.50**
- Mohrson** (C.G. White, 1935) M. 35". H.M. A.M. Deep violet seedling of Wm. Mohr, huge flower, ruffled and crinkled. **.40**
- Mulberry Rose** (Schreiner, 1941) M. 38". H.M. 1943, A.M. 1944. Deep pinkish mulberry, strongly shaded brown. **\$2.50**
- Nene** (Cayeux, 1928) M. 36". Large flower, standards are lilac, falls are red with lighter margin. **.35**
- Ola Kala** (J. Sass, 1943) M. 36". A.M. 1945, tied for Dykes Medal in 1946 and runner-up for Dykes Medal in 1947. A truly wonderful iris. Deep yellow ruffled self, has excellent growing habits. **\$4.00**
- Old Parchment** (Kleinsorge, 1939) M. 39". H.M. 1940, A.M. 1941. Light creamy tan with golden buff overlay. Good substance and long keeping. **\$1.00**
- Ormohr** (Kleinsorge, 1937) M. 38". H.M. A.M. A seedling of Wm. Mohr. Enormous flower of pale lilac with a silvery cast, veined violet. **.50**
- Prairie Sunset** (H. Sass, 1939) ML. 36". H.M. A.M. 1941 and Dykes Medal in 1943. Fine big flower with blendings of peach, apricot, rose, copper and gold. **\$1.50**
- Ranger** (Kleinsorge, 1943) L. 36". H.M. 1944, A.M. 1946. Large flaring flower of almost true crimson red, orange beard, very beautiful. **\$4.00**
- Red Dominion** (Ayres, 1931) L. 40". H.M. Deep rich velvety red, very lustrous in the sunlight. **.35**
- Red Douglas, The** (J. Sass, 1937) ML. 40". H.M. A.M. & Dykes Medal in 1941. Colossal wine-red with brownish cast near center, rich orange beard. **\$1.00**
- Rosy Wings** (Gage, 1935) M. 38". H.M. A.M. Dykes Medal in 1939. Beautiful flower of rosy red color. **.30**
- Rubeo** (Mitchell, 1931) M. 40". Standards are deep glistening rose, falls are velvety maroon. **.40**
- Sable** (Cook, 1938) M. 40". H.M. 1937, A.M. 1940. Deepest blue-black with blue beard. Large flowers of wonderful lustrous sheen. Very popular. **\$1.00**
- San Francisco** (Mohr-Mitchell, 1927) ML. 38". Dykes Medal. Large white plicata edged with lavender. **.35**
- Shining Waters** (Essig, 1933) EM. 40". H.M. A.M. Lovely flower of clear blue. **.40**
- Sierra Blue** (Essig, 1932) ML. 40". Dykes Medal in 1935. Soft, enamel like blue, slightly deeper in color than Shining Waters. **.35**
- Snow Flurry** (Rees, 1939) E. 45". A.M. 1941. Standards are pure icy white, beautifully ruffled. Falls are big, broad, crinkled and pure white. **\$1.50**
- Solid Mahogany** (J. Sass, 1944) M. 39". H.M. 1944, A.M. 1947. Well named and one of the best of recent introductions. Very deep rich red of excellent substance. **\$7.50**
- Spun Gold** (Glutzbeck, 1940) ML. 38". H.M. 1939, A.M. 1942, Dykes Medal, 1944. Rich solid golden color and plant of exceptionally good habits. **\$2.50**
- Tiffanja** (DeForest, 1942) M. 42". H.M. 1944, A.M. 1946. A new plicata. Standards a buff yellow, falls a creamy white edged with brown speckles. **\$2.00**
- Tiffany** (H. Sass, 1938) M. 36". H.M. A.M. A gracefully frilled soft yellow with bronzy pinkish violet plicata. **.50**
- Tobacco Road** (Kleinsorge, 1942) M. 32". H.M. 1944, A.M. 1946. Entirely different golden tobacco-brown self. Falls are broad and held stiffly horizontal. **\$6.00**
- Treasure Island** (Kleinsorge, 1937) M. 38". A.M. 1945. Gigantic flower of bright clear yellow, rich gold beard. **.50**
- Wabash** (Williamson, 1937) M. 38". H.M. 1937, A.M. 1938, Dykes Medal in 1940. Still the outstanding amoena. White standards are slightly ruffled, the deep purple falls are trimmed with a white margin. **.75**
- Wasatch** (Thorup, 1935) E. 36". H.M. Huge clear white plicata with blue stitching. Heavy stalk and broad foliage. **.35**
- White Wedgewood** (Grant, 1943) E.M. 45". H.M. 1943, A.M. 1945. Large porcelain white with blue at base of the white beard **\$7.00**
- Wm. Mohr** (Mohr, 1925) EM. 30". Large flowers of pale lilac, beautifully veined and ruffled. Roots and leaves are small but the flowers are immense. Still one of the best iris. **.30**
- W. R. Dykes** (Dykes, 1937) M. 36". Large crinkled flower of medium yellow. Very rich texture. **.30**

Abbreviations: Blooming season, E—early; M—midseason; ML—midseason late; L—late. Awards, HM—Honorable Mention; AM—Award of Merit; DM—Dykes Medal.

IRIS COLLECTIONS

COLLECTION "A"

One each \$12.00

Azure Skies	Golden Fleece
Berkeley Gold	Mulberry Rose
Day Break	Ola Kala

COLLECTION "B"

One each \$5.00

Buffawn	Great Lakes
Burning Bronze	Ming Yellow
China Maid	Red Douglas
Fair Elaine	Wabash
Golden Majesty	

COLLECTION "C"

One each \$3.00

Alice Harding	Junaluska
Blue Triumph	Marco Polo
Cheerio	Mary Geddes
El Tovar	Shining Waters
Frieda Mohr	Wasatch
Jean-Cayeaux	Wm. Mohr

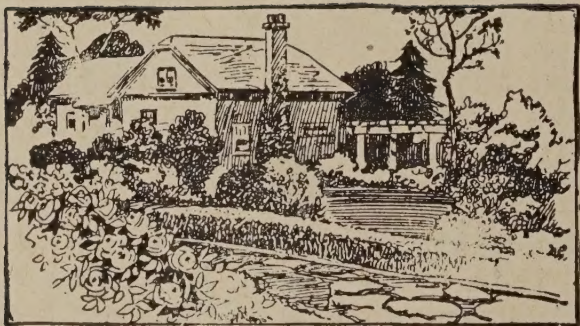
COLLECTION "D"

One each \$3.00

Anitra	Lady Paramount
Buffawn	Marquita
Ella Winchester	San Francisco
Eros	Sierra Blue
Happy Days	Wm. Mohr
Joycette	

Special group prices for plants of one variety.

	One Plant	Three Plants	One Plant	Three Plants
	\$0.30	\$0.75	\$0.50	\$1.25
	.35	.90	.60	1.50
	.40	1.00	.75	2.00
			1.00	2.50



It's Not a Home Until It's Planted.

Rockmont Nursery

BOULDER, COLORADO

Return Postage Guaranteed

Sec. 562, P. L. & R.
U. S. POSTAGE
PAID
BOULDER, COLO.
PERMIT NO. 192

Library
U. S. Department of Agri-
culture,
Washington 25, D. C.